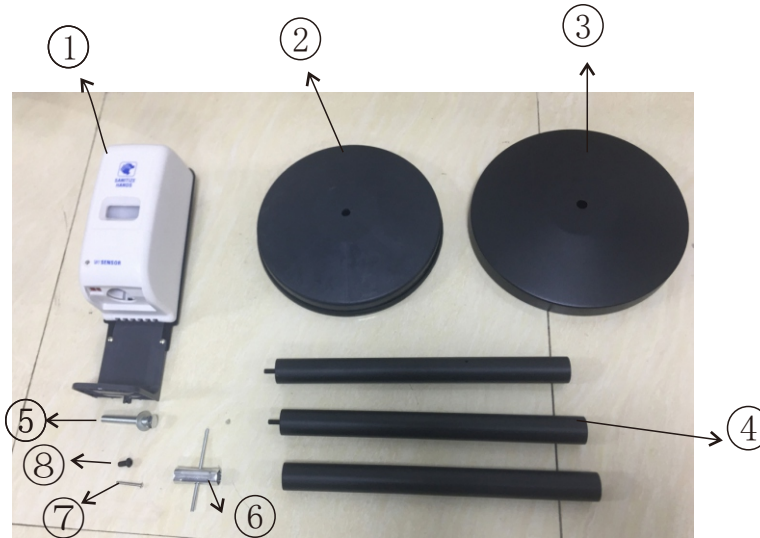
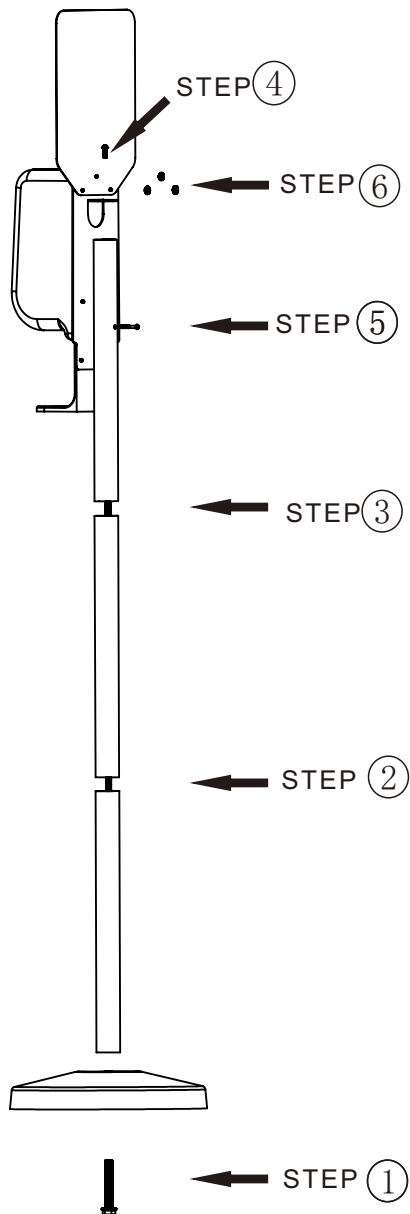


AUTO HAND SANITIZER DISPENSER STAND ASSEMBLY INSTRUCTION



no. 98200
Assheuer + Pott GmbH & Co. KG
D - 59846 Sundern
Germany
Tel.: +49 2933 9735-0
www.aps-germany.de

PARTS LIST

ITEM#	DESCRIPTION	QTY
1	SANITIZER DISPENSER	1
2	WEIGHTED BASE	1
3	BASE COVER	1
4	DIA 38*40CM PIPE	3

HARDWARE LIST

ITEM#	DESCRIPTION	QTY
5	M12 BOLT	1
6	M12 BOLT WRENCH	1
7	M4*40mm SCREW	1
8	M8*25mm SCREW	1

STEPS	INSTRUCTION
1	Take base cover to cover weighted base; Take M12 bolt to assemble pipe and base together
2	Screw the second pipe on
3	Screw the third pipe on
4	Take M8*25mm screw to fix DISPENSER onto pipe
5	Take M4*40mm screw to fix DISPENSER onto pipe
6	Take Plastic screws from dispenser back, and assemble the board on

